

KAMAL MASSIS, M.D.
Tampa General Hospital, Radiology Associates of Tampa

Six(6) Hour EKOS Lysis of Fem-Fem and Fem-Pop Graft

Patient History

- 61 yo male with history of fem-fem and R fem-pop bypass, admitted to E.R.
- Patient presents with cold R foot and no palpable pulses
- Patient medical history of PVD, CHF, Cardiomyopathy and Atrial Fibrillation
- Patient stopped taking Plavix two weeks ago

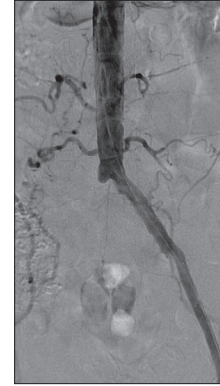
Procedure

- Fem-fem anastomosis at the mid-portion of the L CFA requiring sheath in L Proximal SFA
- 50 cm EKOS L SFA to the proximal R popliteal artery
- Bolus of 6mg of tPA before starting infusion rate of 1mg/hr

Post

- 6 hours complete lysis of the fem-fem and fem-pop graft
- Culprit high-grade distal fem-pop anastamotic stenosis was ballooned to 6 mm with great outcome
- 3 vessel runoff observed

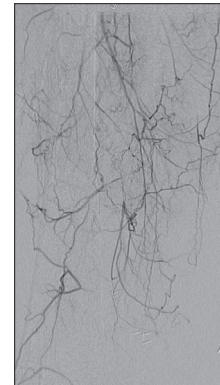
“Total resolution of all thrombus in both fem-fem and fem-pop. 6 hours, 12 mg tPA. Phenomenal outcome!!!” – Kamal Massis, M.D.



Pre Aortogram showing complete L g R fem-fem occlusion



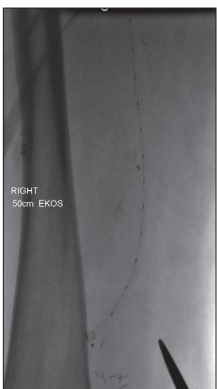
Pre Selective R CFA arteriogram showing complete occlusion of R fem-pop



Pre Runoff showing popliteal reconstitution



Pre Ekos catheter in fem-fem reconstitution



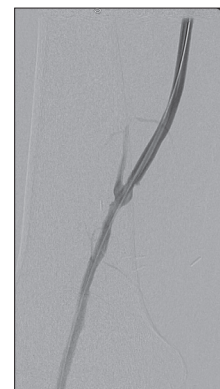
Pre Ekos catheter in fem-pop



Post Fem-fem and proximal fem-pop



Post Culprit lesion at the distal anastomosis



Post Final



Post Runoff



EKOS Corporation • 11911 N Creek Pkwy S • Bothell, WA 98011
T 888.400.3567 • F 425.415.3101 • www.EKOScorp.com