

ASH VERMA, MD
Morton Plant Mease Healthcare • Clearwater, FL

MicroSonic™ Accelerated Thrombolysis Of Long-Segment Occlusive Venous Thrombus In 6 Hours

Patient History

69-year-old female patient with a history of lung carcinoma who presented 5 months post surgical placement of a left subclavian chest port:

- One week history of swelling and pain in the upper left extremity
- Left arm ultrasound shows occlusive DVT in left basilic, brachial, axillary and subclavian veins

Treatment

EKOS Mach 4 30cm infusion length catheter placed across the thrombus:

- Left arm venogram demonstrated occlusive thrombus up to the level of the subclavian vein port catheter entry site
- Left brachiocephalic vein and superior vena cava were patent
- 1 mg/hour tPA given (35 mL/hr volume), coolant at 75 mL/hr

Results

Patient brought back 6 hours after EKOS Mach 4 was placed:

- There was complete lysis of the occlusive thrombus
- There was complete focal occlusion of the subclavian vein at the level of the port catheter entry site
- The subclavian vein was angioplastied using 10mm and 12mm high pressure balloons
- Some residual stenosis was due to underlying venous scarring, however, brisk flow was restored within the veins
- The port was successfully preserved
- Upper extremity pain and swelling resolved within 48 hours
- Patient placed on Heparin followed by Warfarin
- 2 month follow-up — patient asymptomatic with a normally functioning port

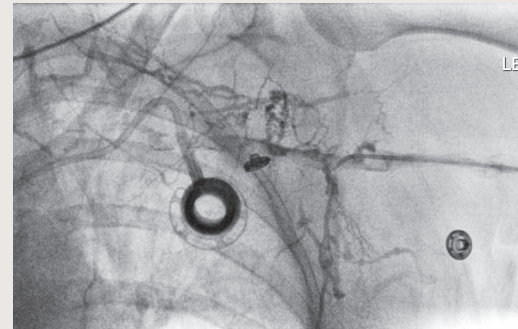
“Another complete EKOS success!” – *Ash Verma, MD*

EKOS®

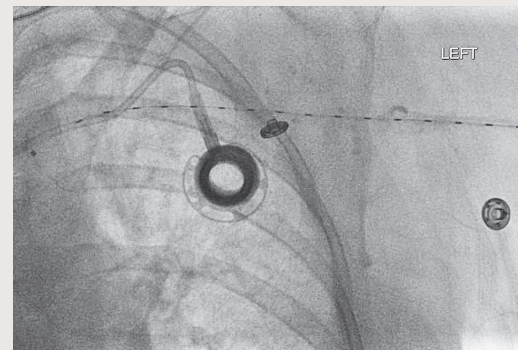
EKOS Corporation • 11911 N Creek Pkwy S • Bothell, WA 98011
T 888.400.3567 • F 425.415.3101 • www.EKOScorp.com

Intended Use The EKOS® EndoWave® Infusion Catheter System is intended for controlled and selective infusion of physician-specified fluids, including thrombolytics, in the peripheral vasculature. **Contraindications** • Not designed for peripheral vasculature dilation purposes. • This system is contraindicated when, in the medical judgment of the physician, such procedure may compromise the patient's condition.

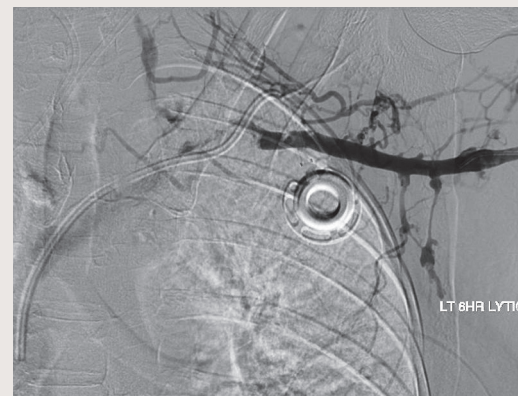
© 2008 EKOS Corporation • CE0197 • 20021-EN-001



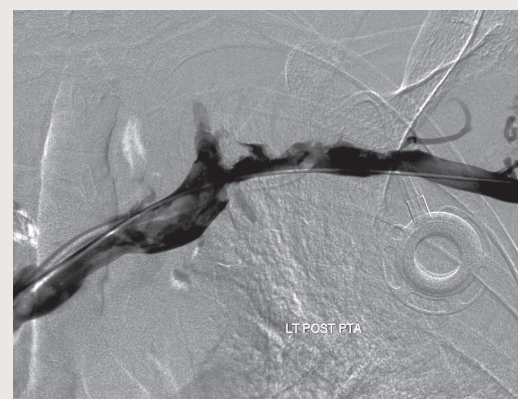
Occluded subclavian vein – pre-EKOS



EKOS device placement



Post-lysis subclavian vein



Brisk flow – post-angiography