

DAVID VARNAGY, M.D.
JOHN D HOROWITZ, MD
Health Central, Ocoee, FL

Treatment of Bi-Lateral DVT with Ekos Device

Patient History

50-year old female with history of thrombocytopenia currently on interferon, presents with bilateral lower extremity Phlegmasia Alba Dolens:

- History of PE
- Diagnosis of IVC thrombosis and Bilateral DVT
- Venogram of cava shows thrombosis extending up through IVC filter

Treatment

Two EKOS Mach4 50cm infusion length devices placed across the thrombus:

- Right popliteal vein access with coverage from distal-SFV to right common iliac vein
- Left popliteal vein access with coverage from mid-SFV through IVC filter
- 2 mg bolus of tPA injected through both devices
- 1 mg/hr tPA delivered through each device

Results

Patient returned to the lab the following day for repeat Venogram:

- Complete resolution of DVT in the popliteal veins, superficial femoral veins and common femoral veins
- IVC filter free of acute clot with some areas believed to be scar tissue and older clot
- Some residual clot in iliac vein believed to be chronic due to adherence to vessel wall

“Patient’s overall result is excellent, with an 80-90% result!”

– David Varnagy, MD

EKOS®

EKOS Corporation • 11911 N Creek Pkwy S • Bothell, WA 98011
T 888.400.3567 • F 425.415.3101 • www.EKOScorp.com

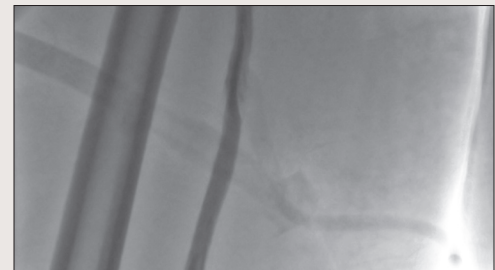
Intended Use The EKOS EkoSonic™ Endovascular Device is intended for controlled and selective infusion of physician specified fluids, including thrombolytics, into the peripheral vasculature. **Contraindications** • Not designed for peripheral vasculature dilation purposes. • This system is contraindicated when, in the medical judgment of the physician, such procedure may compromise the patient’s condition. © 2009 EKOS Corporation • CE0197 • 25319-EN-001



Pre-Ekos Left SFV with thrombus



Pre-Ekos Right Iliac Vein with thrombus



Post-Ekos Left SFV with clot completely resolved



Post-Ekos Right- all acute clot resolved with some chronic adherence



Post-Ekos Bifurcation clear and patent through filter