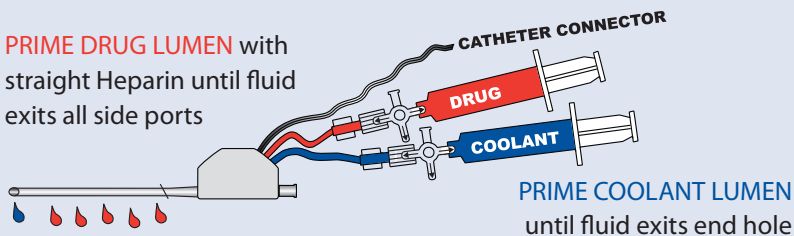


Set Up

1 PRIME

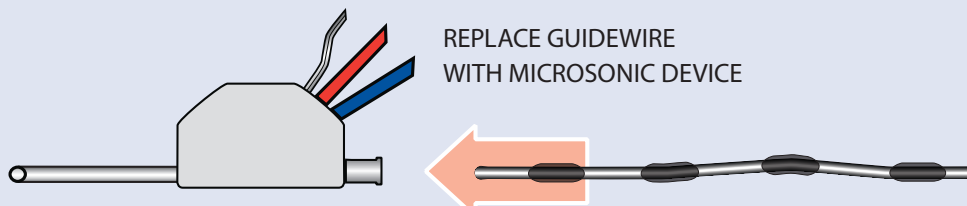
PRIME DRUG LUMEN with straight Heparin until fluid exits all side ports



2 POSITION

POSITION CATHETER IN PATIENT
(6F or larger sheath and 0.035 Guidewire)

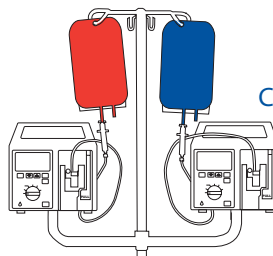
3 INSERT



4 PUMP

CONNECT DRUG LUMEN TO INFUSION PUMP

Infuse per hospital protocol
Max 35 ml/hr
Min 5 ml/hr



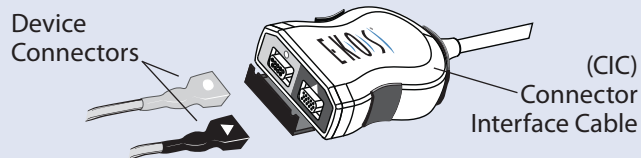
CONNECT COOLANT LUMEN TO INFUSION PUMP

Infuse per hospital protocol
Max 120 ml/hr
Min 35 ml/hr

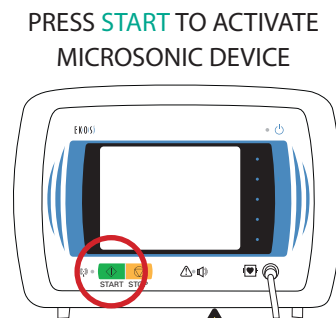
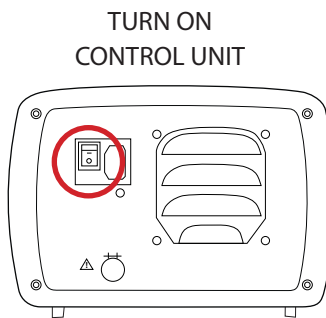
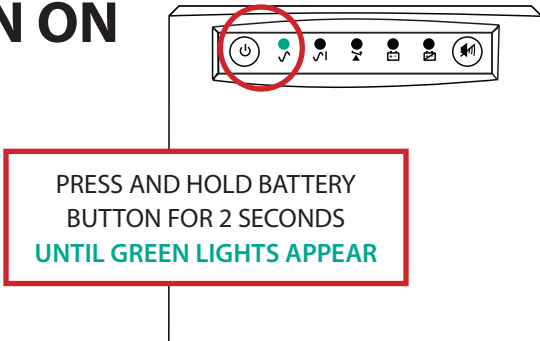
TURN ON INFUSION PUMP

5 CONNECT

CONNECT ENDOVASCULAR DEVICE TO CONNECTOR INTERFACE CABLE



6 TURN ON



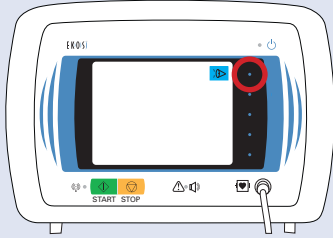
EKOS Corporation
11911 North Creek Parkway S.
Bothell, WA 98011, USA
425-415-3100
Fax: 425-415-3101
www.ekoscorp.com

**For assistance 24/7
call the EKOS HELP LINE
888-356-7435**

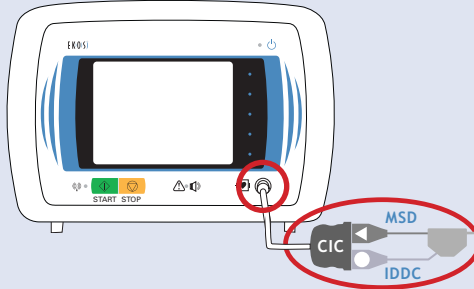
Troubleshooting

CONTROL UNIT ALARMS

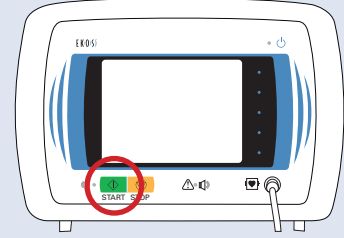
1 Mute ALARM



2 Check Connections

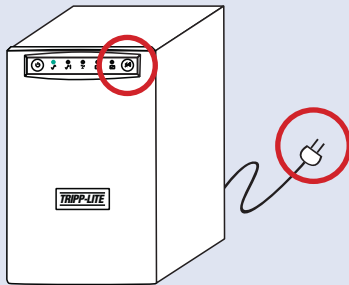


3 Press **START**



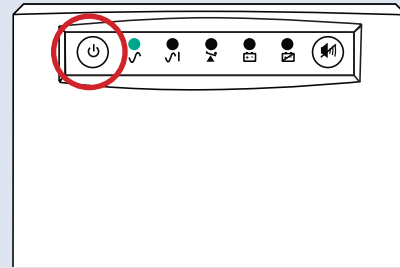
BATTERY ALARMS

1 Press **MUTE** button
for 2 seconds
Check if battery is plugged in



BATTERY NO POWER

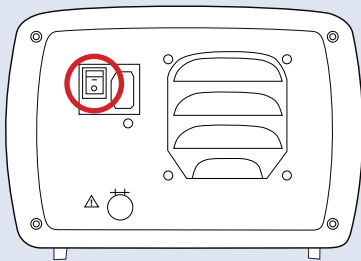
1 Press and hold battery
ON/OFF button
Until green light appears on battery



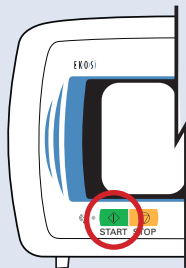
SYSTEM FAILS TO RESTART

1 Turn control unit OFF
& ON

Back of unit

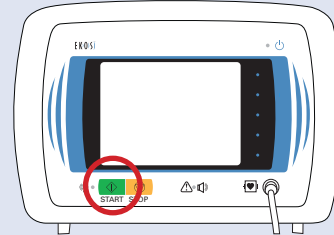


2 Press
START



START PROMPT ALARM

1 Press **START**
If needed



See manual for: • Informational ICON identification
• Additional trouble shooting

**If you continue to have problems call
the EKOS HELP LINE for assistance 24/7**

888-356-7435



EKOS Corporation
11911 North Creek Parkway S.
Bothell, WA 98011, USA
425-415-3100
Fax: 425-415-3101
www.ekoscorp.com